



TELECO

FORCE HD CI+

USER'S MANUAL

HDMI
HIGH DEFINITION MULTIMEDIA INTERFACE



USB 2.0



HD Sat Receiver with CI +

SAFETY INSTRUCTIONS.....	2
1. INSTALLATION OF STB.....	4
1.1 FRONT PANEL.....	4
1.2 REAR PANEL.....	4
1.3 CONNECTIONS.....	5
1.4 REMOTE.....	7
2. MAIN MENU.....	8
3. EDIT CHANNEL.....	8
3.1 TV CHANNEL LIST.....	8
3.2 DELETE ALL.....	10
4. INSTALLATION.....	10
4.1 ANTENNA CONNECTION.....	10
4.2 SATELLITE LIST.....	10
4.3 ANTENNA SETUP.....	11
4.4 SINGLE SATELLITE SEARCH.....	11
4.5 MULTI SATELLITE SEARCH.....	11
4.6 TP LIST.....	12
4.7 OTHER.....	13
5. SYSTEM SETUP.....	13
5.1 LANGUAGE.....	13
5.2 TV SYSTEM.....	13
5.3 DISPLAY SETTING.....	14
5.4 LOCAL TIME SETTING.....	14
5.5 TIMER SETTING.....	14
5.5 PARENTAL LOCK.....	15
5.6 OSD SETTING.....	15
5.7 FAVORITE.....	15
6. TOOLS.....	15
6.1 INFORMATION.....	16
6.2 FACTORY SETTING.....	16
6.3 SW UPDATE BY OTA.....	16
6.4 UPDATE BY USB.....	16
6.5 MEDIA PLAYER.....	17
6.6 REMOVE USB DEVICE SAFELY.....	17
7. GAME.....	17
8. OTHER FUNCTIONS INTRODUCTION.....	17
8.1 PROGRAM INFORMATION.....	17
8.2 FAVORITE LIST.....	18
8.3 PROGRAM GUIDE.....	18
8.4 VOLUME CONTROL.....	18
9. TECHNICAL SPECIFICATIONS.....	19
10. TROUBLESHOOTING.....	21

SAFETY CAUTION:

Safety Instructions

DO NOT INSTALL YOUR RECEIVER:

- In a closed or poorly ventilated cabinet;
- Directly on top of or under any another equipment;
- On a surface which might obstruct the ventilation slots.

DO NOT EXPOSE THE RECEIVER OR ITS ACCESSORIES:

- To direct sunlight or heat generated by any other nearby equipment;
- To rain or intense moisture;
- To any shock which may cause permanent damage to your receiver;
- To any magnetic objects, such as loudspeakers, transformers, etc.;
- To intense vibration;
- Never open the cover. It is dangerous to touch the inside of the receiver due to high voltage currents and possible electrical hazards. Your warranty will be void if the receiver has been opened.
- When the receiver is not used for a long period of time, you should unplug the power cord from the wall socket.
- Do not use a damaged power cord. It may cause a fire or an electrical shock.
- Do not touch a power cord with wet hands. It may cause an electric shock.
- Place the receiver in a well-ventilated environment.
- When you are connecting the cables, be sure that the receiver is disconnected from the mains supply voltage.
- Do not use your receiver in a humid environment.

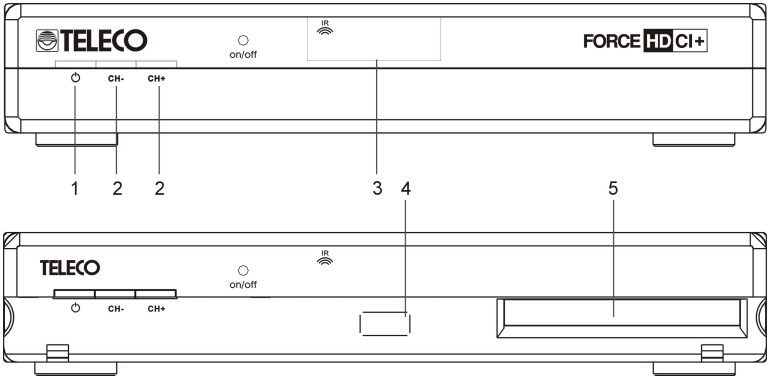
Make sure you read this user manual before installing your receiver.

Main features:

- Supports MPEG-2, MPEG-4(H.264) and fully DVB-S2 compliant
- Supports Common Interface, and Common Interface Plus
- DiSEqC 1.0, 1.1, 1.2 and USALS(DiSEqC 1.3)
- Fast channel filtering by first letter of channel name
- Digital sound through coaxial output (S/PDIF)
- Display showing 4 digit channel number or time
- Max. 4,000 channels memory capacity
- 8 Favourite lists for TV-and Radio programmes
- Quick and easy installation & user-friendly menu
- Excellent Audio & Video quality
- *Displayable Video Formats min. 576i,576p, 720p, 1080i*
- Parental lock function for menu selectable per channel
- Teletext via OSD & VBI
- Electronic Programme Guide (EPG) for present/following event information and up to 7 days for on screen programme information
- Full multi-lingual DVB subtitling and audio track support
- *Multi-lingual support on screen menu (OSD): English, German, French, Italian, Dutch, etc.*
- Edit functions for TV or Radio programme name
- Signal strength bar for digital transponders
- Automatic and manual channel scan options
- Power on with last viewed channel
- 8 Timers for on and off or sleep-timer with 3 modes (daily, weekly, once)
- User-friendly remote control with coloured function buttons
- Low power consumption in standby
- Automatically Standby mode setting after 3 hours without user activity/operation, (before going to Standby mode, there is an about 2 minutes' warning).
- Connections: LNB IN, LNB OUT, 1 Scart TV (CVBS, RGB), HDMI (HDCP), S/PDIF(Coaxial), USB2.0, CVBS+Audio L/R (Composite Audio/ Video).
- 7 segment 4 digit LED Display
- USB interface for MP3/ JPG playback and S/W update function
- S/W update through satellite supported

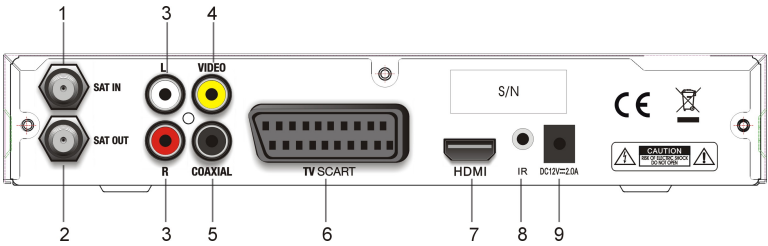
1. Installation of STB

1.1 Front Panel



- 1. Standby:** Used to switch the set top box to on or standby.
- 2. CH+/CH- Button:** Changes the current channel.
Moves the cursor up/down in Menu state. Changes the current program to the previous/next program in No-menu state.
- 3. LED Display:** Used to display channel information.
- 4. USB Port:** Used to connect an external USB 2.0 Device.
- 5. CI+ Slot:** Used to attach a CI+ Module.

1.2 Rear Panel



- 1. SAT IN**
Connect the Satellite Dish LNB.
- 2. SAT OUT**
Output loop-through LNB signal.
- 3. AUDIO Right and Left**
These connectors can be used to connect the audio signal to an external amplifier, or the audio input of your TV.

4. VIDEO

This connector has a constant video signal for additional VCR-connections.

5. COAXIAL

Use this coaxial output to connect your receiver to the input of your digital audio amplifier.

6. TV SCART Connector

Use this connector to connect your receiver to your TV set using a SCART cable.

7. HDMI

Connecting to the HDMI input on the TV set.

8. IR

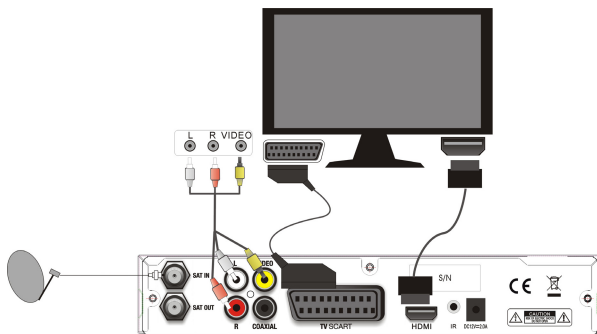
9. DC12V, 2.0A

1.3 Connections

Note: Before connecting this STB to other devices, power off all the devices.

● Connecting to TV

1. Connect the satellite signal from the LNB to the SAT IN connector.
AND
2. Connect the TV using an AV cable.
OR
3. Connect the TV using an HDMI cable.
OR
4. Connect the TV using a SCART cable.



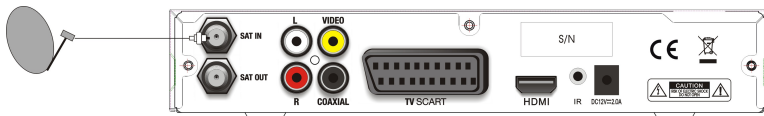
● Connecting to Dish

Aiming a satellite dish and LNB to the correct longitude and Azimuth (angle of elevation) of a satellite is a specialist job, and can best be done by an official dealer.

<Connecting a fixed satellite dish to your receiver>

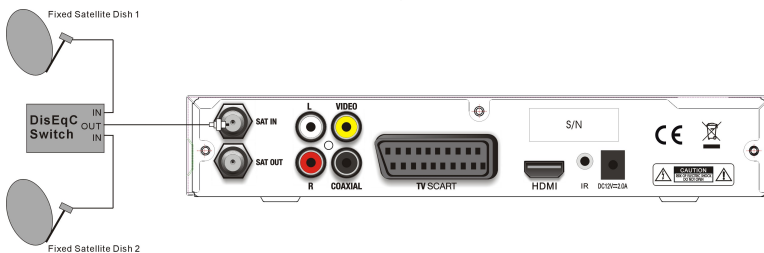
Make your choice of which satellite you want to receive your signals from, and have your dealer aim your dish at the requested satellite.

Connect a coax cable to your LNB and the other end directly to the LNB IN connector of your receiver.



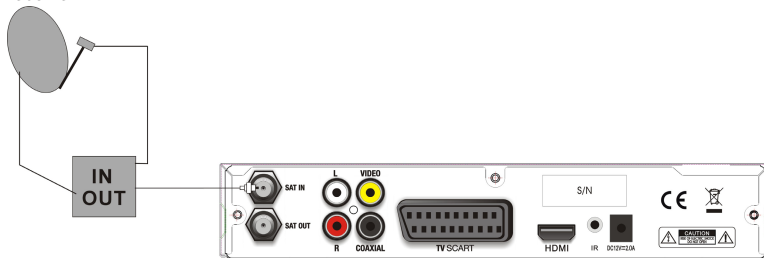
<Connecting multiple fixed dishes to your receiver using a DiSEqC 1.0 switch>

If you want to watch programs from several satellites (For instance from Astra and from Hot Bird) it is advisable to use fixed dishes and a DiSEqC 1.0 switch. Have your Dealer aim the dishes at the requested satellites and connect the LNBs with coax cables to the IN connectors of the DiSEqC 1.0 switch. Connect the OUT connector of the DiSEqC 1.0 switch to the LNB IN connector at the back of your receiver.



<Connecting a dish on a motorized positioner to your receiver>

Another possibility to watch programs from multiple satellites is mounting a dish on to a motorized DiSEqC 1.2 positioner. Have your dealer mount the dish on the positioner, set the correct azimuth (angle of elevation) and set the center point for your positioner. Connect the LNB with a coax cable to the LNB IN connector of the positioner, and connect the OUT connector of the positioner to the LNB IN connector at the back of your receiver.



- Connect the terrestrial signal from the LNB to the LNB IN connector.
- Connect the SCART lead between the main SCART socket on the TV and the TV SCART socket on the receiver or Connect the TV using an AV cable.
- Connect to VCR with a SCART cable.
- Connect the S/PDIF connector at the back of your receiver to the suitable input of your Digital Audio
- Turn on the TV. Set TV to AV mode.

- Connect the STB's power cables into 12 Vdc power source (battery).
- Wait till when the display shows the message "Lock" and it is ready to select the program.

1.4 Remote

All the features of the set-top box can be controlled with the remote control unit.



⏻: Switch between operation and standby modes

🔇: Press to temporarily mute

0-9: To enter a number or select a channel number to watch

AV key: To toggle between TV and AV mode

TV/R: To switch between TV and Radio mode

MENU: To display the main menu

EXIT: To return to the previous menu or quit the item

OK: To confirm

⬅️➡️⬆️⬆️: To move cursor up/down/left/right, page up/down,

Volume +/-

FAV: Press to display the TV favorite list.

EPG: Shows the EPG (Electronic Program Guide) only when menu is off.

V+/V-: Volume +/-

AUDIO: To display the Audio Select window.

INFO: Shows information on the current channel

ZOOM: To magnify the picture.

P+/P-: Page up or down in menu list

SAT: To display the satellite list.

TEXT: Shows current service's Teletext on OSD.

SUB: Shows the list of subtitled languages supported by the current channel.

RCL: Switches to Last channel viewed.

⏸: Pause.

⏮: Play previous item.

⏭: Play next item.

➡: Enter the media player menu.

▶: Play.

⏪: Slow playing.

⏩: Fast playing.

■: Stop.

2. Main Menu

The STB contains a facilitated user interface; this function makes it easier for the user to recall all the device functions.

Operation Steps: Press "**MENU**", you will display this main menu.

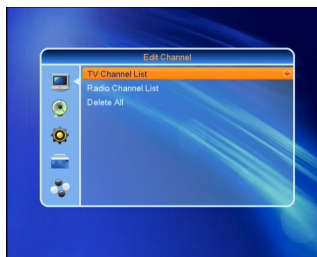


- If no menu is displayed on the screen, press the **[MENU]** key to display the main menu.
- When the menu is displayed on the screen, press the **[MENU]** or **[EXIT]** key to return to the top-level menu.
- **[OK]** key: Press this key to go to the current sub-level menu item.
- **[▼▲]** key: To move up and down.

3. Edit Channel

From the main menu, you can press UP or DOWN to select the "**Edit Channel**" icon.

From this menu, we can select "**TV Channel List**", "**Radio Channel List**" and "**Delete All**" items.



3.1 TV Channel List

You can add channels to a favorite group, lock channel, skip channel, move channel and edit channel in the "**TV Channel List**" Menu



3.1.1 FAV

In "**TV Channel List**" menu, you can select channels by pressing the UP/DOWN key, then press the "**FAV**" key and "**OK**" key to enter the favorite group list, press UP/DOWN to select one favorite group, and press "**OK**" to confirm; press the "**EXIT**" key to add the channel to this favorite group.



3.1.2 Lock

In the "TV Channel List" menu, you can select a channel by pressing the UP/DOWN key, then press the "RED" key and "OK" key to lock this channel. Press "OK" again to cancel the lock.

If the "OK" key is pressed again the selected channel is unlocked.



3.1.3 Skip

In the "TV Channel List" menu, you can select a channel by pressing the UP/DOWN key, then press the "GREEN" key and "OK" key to skip. Press "OK" again to cancel skipping.



3.1.4 Move

In the "TV Channel List" menu, you can select a channel by pressing the UP/DOWN key, then press the "YELLOW" key and "OK" key to mark it, and press the UP/DOWN key to move this channel to your chosen position.



3.1.5 Edit

In the "TV Channel List" menu, you can press the "BLUE" key to edit the channel list. In the "Edit" menu, you can sort, edit and delete channels.

- **Sort**

You can sort channels by pressing the "RED" key.

- **Edit**

You can rename channels by pressing the "GREEN" key.

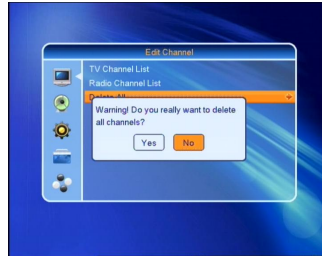
- **Delete**

You can delete channels by pressing the "BLUE" and "OK" keys.



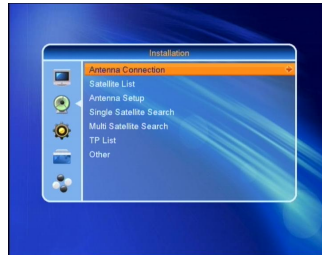
3.2 Delete All

In the “**Edit Channel**” menu, press the UP/DOWN key, select “Delete All”, and press the “**OK**” key, then choose to delete all channels.



4. Installation

From the main menu, you can press the UP or DOWN key to select the “**Installation**” icon. From this menu, we can select “**Antenna Connection**”, “**Satellite List**”, “**Antenna Setup**”, “**Single Satellite Search**”, “**Multi Satellite Search**”, “**TP List**” and “**Other**”.



4.1 Antenna Connection

From the “**Installation**” menu, you can select the “**Antenna Connection**” menu.

The user can select the antenna connection mode.



4.2 Satellite List

From the “**Installation**” menu, you can select the “**Satellite List**” menu.

In this menu, you can select and edit the satellites.



- **Edit**

Press the UP or DOWN button to select one satellite, press the **RED** button to enter the “Edit Satellite” menu, press a numeric key to enter the new name.



- **Add**

Press the **GREEN** button to add a new satellite.

- **Delete**

Press the **BLUE** button to delete a selected satellite.

4.3 Antenna Setup

From the “Installation” menu, press the **OK** button on **Antenna Setup** to display this window.



Satellite: If you press **OK** in Satellite, the satellite list is displayed. Move the cursor to a satellite and press **OK** to select the satellite

LNB Freq: To change LNB Frequency.

Transponder: To change the transponder.

DiSeqC1.0: The default setting is Disable. You can select Port1~Port4

22k: The default setting is Auto.

Polarity: To change the Polarity.

4.4 Single Satellite Search

In this menu, you can select one satellite and set **FTA Only**, **Scan Channel** and **Scan Mode** to search channels only on the selected satellite.



4.5 Multi Satellite Search

In this menu, you can set **FTA Only**, **Scan Channel** and **Scan Mode** to search channels on multiple satellites.



4.6 TP List

In this menu, you can edit the transponders, add transponders, delete transponders, and search channels with the selected transponder.

- **Edit**

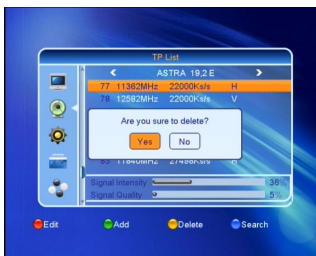
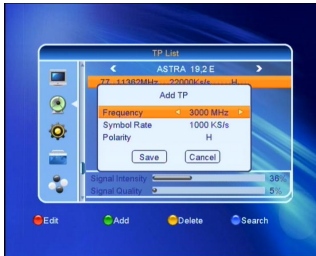
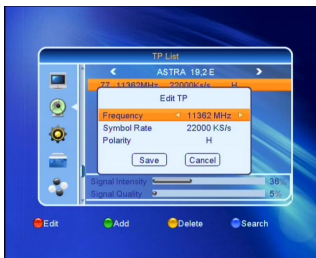
Press the **UP** or **DOWN** key to select one transponder, press the **RED** key to edit it by setting Frequency, Symbol Rate and Polarity. After setting, select "**Save**" and press **OK** to save the operation, select "**Cancel**" and press **OK** to cancel the operation.

- **Add**

You can press **GREEN** key to add transponders by setting Frequency, Symbol Rate and Polarity. After setting, select "**Save**" and press **OK** to save the operation, select "**Cancel**" and press **OK** to cancel the operation.

- **Delete**

Press the **UP** or **DOWN** key to select one transponder, press the **YELLOW** key to delete it.



- **Search**

Press the **UP** or **DOWN** key to select one transponder, press the **BLUE** key to search channels by setting **FTA Only**, **Scan Channel** and **Network Search**.



4.7 Other

In this menu, you can set **LNB Power** (On or Off), **LNB Standby Loop** (On or Off), **Channel Play Type** (All, Free or Scrambled) **BER** (On or Off) and **Auto Standby**.

Auto Standby: You can set the Auto Standby time. After the set time, the receiver will go to standby mode.



5. System Setup

From the main menu, you can press the UP or DOWN key to select the **"System Setup"** icon. From this menu, you can select **"Language"**, **"TV System"**, **"Display Setting"**, **"Local Time Setting"**, **"Timer Setting"**, **"Parental Lock"**, **"OSD Setting"**, and **"Favorite"** items.

5.1 Language

You can set Language, First Audio language, Second Audio language and Teletext language.



5.2 TV System

You can set Video Resolution, Aspect mode, Video Output and Digital Audio Output.



5.3 Display Setting

You can set **Brightness**, **Contrast** and **Saturation**.



5.4 Local Time Setting

You can set your STB's time. This function is useful for EPG and some timer functions. If a broadcaster provides GMT, you can set the time using GMT or set your own time by yourself. If the "GMT usage" is set to "Off", you can only set **Date** and **Time**. If you set "GMT Usage" to "On", you can select "GMT Offset" and set "Summer Time" to "On" or "Off".



5.5 Timer Setting

You can set the timer to make the receiver perform designated actions including timer based wake up or sleep instructions to the set-top-box.

Use the **UP/DOWN** buttons to select timer. Press the **OK** button to enter your selected timer settings.

You can set it as follows:

Timer Mode: To select the timer mode, Once, Daily or Off.

Timer Service: To select timer service, Channel or Record.

Wakeup Channel: To select the wakeup channel of the timer action.

Wakeup Date: To set the date of the timer action.

On Time: To set the time of the timer action.

Duration: To set the duration time.



5.5 Parental Lock

In "Parental Lock" menu, you can set Menu Lock, Channel Lock and change the password.



5.6 OSD Setting

You can set OSD Timeout and OSD Transparency.



5.7 Favorite

You can select the favorite group and press "OK" key to rename it.



6. Tools

From the main menu, you can press the UP or DOWN key to select the "Tools" icon. From this menu, you can select the "Information", "Factory Setting", "S/W Update by OTA", and "Update by USB" items.



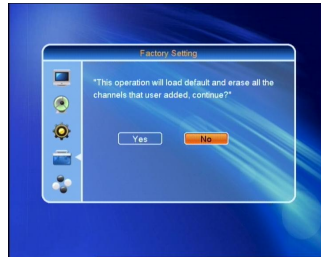
6.1 Information

From the “Tools” menu, you can select the “Information” menu. In this menu, you can view the HW version and SW version.



6.2 Factory Setting

You can restore factory settings by selecting “Load Factory Setting” and pressing the “OK” key. Select “Yes” and press the “OK” key to confirm; select “No” and press the “OK” key to cancel.



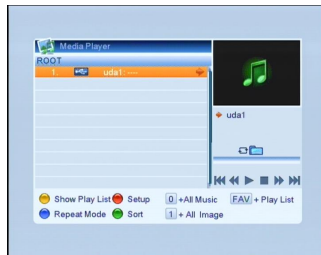
6.3 SW Update by OTA

From the “Tools” menu, you can select “SW Update by OTA” menu. In this menu, you can upgrade software by setting Satellite, Transponder, Frequency, Symbol Rate, Polarity and Download PID. After setting completion, you can select “Start” and press “OK” to start software update.



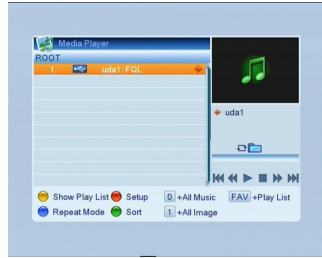
6.4 Update by USB

You can control “Software Update” by USB.



6.5 Media Player

In this menu, you can play music and set up the media player.

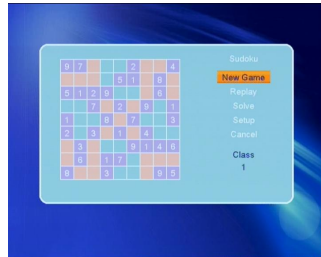
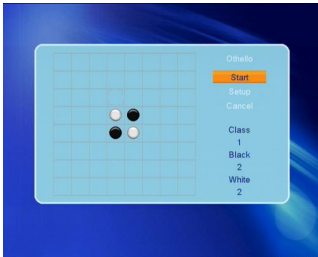


6.6 Remove USB device safely

Select this item and press OK key to remove an USB device safely.

7. Game

There are two games in this menu (Othello and Sudoku), you can play them following the instructions.



8. Other functions introduction

8.1 Program information

If you press the **INFO** button once, a banner is displayed on the screen, and if you press the button again while the banner is still displayed, the banner will show the record list.



8.2 Favorite List

If you press **"FAV"** on the remote controller and you are not inside the menu, the favorite group list will be displayed on the screen. You can select one favorite group and press **"OK"** key to enter the favorite channel list.

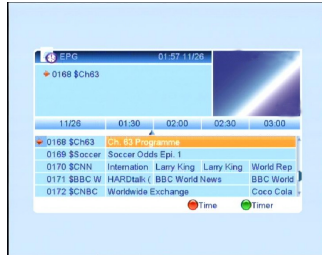


8.3 Program Guide

EPG shows the event information for the current channel by time zone.

Move the cursor to an event in the required time zone, and press the **"RED"** key. You can view the EPG for the week.

Move the cursor to an event in the required time zone, and press the **"BLUE"** key. Then the timer is set to the designated time.



8.4 Volume Control

- Adjust volume: Press the **"Left/right"** key on the remote control when you are not inside the menu.
- Mute: Press the **"Mute"** key on the remote control at No menu state



9. Technical Specifications

Tuner & Channel Decoder

Input/Loop through Connector	F-type, IEC 169-24, Female
Frequency Range	950 ~ 2150MHz
LNB Power & Polarisation	Vertical : $+13.5 \pm 1\text{VDC}$ Horizontal: $+18.5 \pm 1\text{VDC}$ Current : Max.500mA with Overload Protection
22KHz Tone	Frequency : $22 \pm 1\text{KHz}$ Amplitude : $0.65 \pm 0.2\text{V}$
Demodulation	DVBS QPSK ,DVBS2 QPSK ,DVBS2 8PSK
Input Symbol Rate	DVBS 1...45 Msps DVBS2 1~30Mbps
Code Rate	1/2, 2/3, 3/4, 5/6 ,7/8 and 9/10

MPEG Transport Stream A/V Decoding

Transport Stream	ISO/IEC 13818-1 MPEG-2, H.264/AVC Transport stream Specification
Profile Level	MPEG-2 MP@ML, MP@HL, MPEG-4 H.264/AVC
Aspect Ratio	4:3, 16:9
Video Resolution	576i, 576p, 720p, 1080i
Audio Decoding	MPEG-1 Layer 1 & 2, Dolby Downmix, Dolby AC3, Dolby Digital Plus(DD+)

Main System

Main Processor	ALI M3606
----------------	-----------

A/V & Data In/Out

HDMI	HD Video/Audio Output
TV Scart	Video CVBS/RGB, Audio L/R output

S/PDIF	COAXIAL
RCA A/V	Video CVBS output Audio L/R output
USB	USB2.0 Host

Conditional Access Interface

PCMCIA	no
--------	----

Front Panel

Key	one power button
LED	7 segment 4 digit LED Display

Power Supply

Input Voltage	100~240VAC, 50/60Hz
Type	SMPS
Power Consumption	Running: Max. 8W when LNB Off, Standby: Max 2W with clock showing on LED display


10. Troubleshooting

There may be various reasons for the faulty operation of the receiver.

Check the receiver according to the procedures shown below.

If, after checking the receiver, the problem persists, contact the dealer. Do not open the receiver cover. This may be a source of danger.

Problem	Possible causes	What to do
Display on front panel does not light up.	The power cord is not plugged in.	Check that the power cord is plugged in to the wall outlet.
No picture or sound	Wrong connection of the Audio/Video output of the receiver to TV. Audio muting. TV power off.	Connect the Audio/Video output of the receiver to TV correctly. Press the Mute button. Turn TV on.
No picture	The receiver can't receive the signal Incorrect values of some tuner parameters. Wrong pointing of the dish	Check the antenna cable, replace the cable, or connect the cable to the receiver tightly. Set the values of tuner parameters correctly in installation menu. Check the signal strength with a spectrum analyzer and adjust your dish correctly.
The remote control does not work	The batteries of the remote control are not inserted or are flat	Check whether the batteries are inserted correctly in your remote control. Check the battery charge, and replace the batteries in the remote control if necessary..

 **Tips:** If, after this troubleshooting, the experienced problem has not yet been solved, please contact your local dealer or technical support centre immediately; do not open the machine enclosure, because doing so is very dangerous and could damage the machine.

